

Blueprint Robotics

Case Study

Previous System:
(201) 6 Lamp T5
Industrial Fluorescent
High Bays

Mledtech System:
(201) MNS-HB-150W
LED Recreation Series
High Bays



Customer Profile

Blueprint Robotics is a commercial manufacturer based in East Baltimore. As experienced construction professionals, they recognize that the industry is routinely challenged with delays, cost overruns, waste, and a general lack of technological advances. They manufacture in a climate-controlled facility utilizing a highly skilled workforce and state-of-the-art robotic technology.

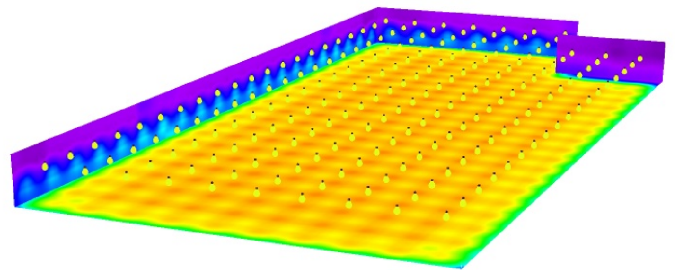
Scope of Work

Mledtech was contacted during the Summer of 2018 by facility managers at Blueprint Robotics. They were looking for a "one for one" LED lighting solution for their manufacturing plant. The desired goal was to increase lighting luminance and uniformity, and at the same time, reduce high energy usage and maintenance costs.

During an initial site visit, our case manager benchmarked light levels with a photometer. Next, our design team put together a photometric study to ensure light levels could be achieved with a "one for one" swap. After reviewing our proposal and design, Blueprint Robotics decided that our MNS-HB-150W recreation series high bay was the system they needed.

The Solution

Our MNS-HB-150W recreation series high bay was the exact product needed to achieve the desired results.



mledtech

LED Commercial Lighting

Enhance Human Performance

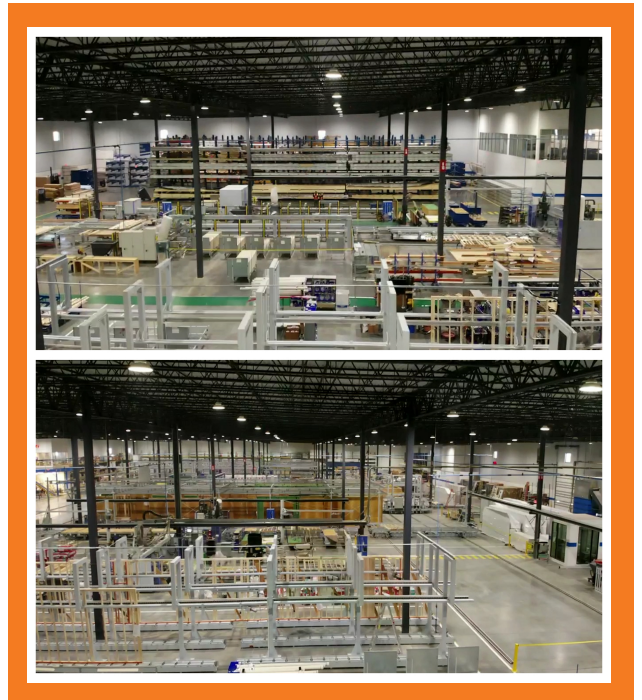
The Results

In an industry where every cut counts, visual comfort is key for the safety and productivity of factory workers. The results of this project speak to the quality of light produced by our recreation series high bays. Also, Blueprint Robotics noticed the significant impact on the light levels and uniformity after project completion.

The new system achieved an average of 21 foot candles and an energy reduction of 60 percent. The initial bench marked light levels were approximately 40% less, and the fluorescent fixtures produced an abundance of glare in comparison to the replacements (see below).

Red Circle: Fixtures before the upgrade
Blue Circle: Fixtures used after upgrade!

What a difference!



Mledtech approaches each project as a unique opportunity to exceed the customers', the players' and the observers' expectations in terms of improved lighting delivered, improved visual comfort and operational savings. Our process steps help streamline this effort. We will meet directly with financial decision makers to go over final proposal in detail. Mledtech will work with the customer's contractor to provide them with detailed computer aiming points which can be set while on the ground.

