

Perryville High School

Case Study

Previous System:
(40) 1500W
Metal Halide Flood
Lights

Mledtech System:
(48) FL9M-630W
Performance Series
Sports Lights



Customer Profile

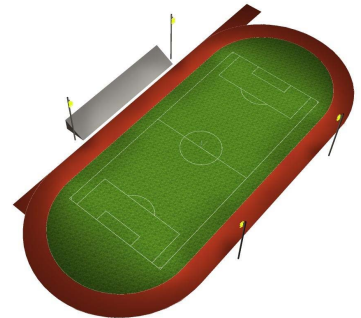
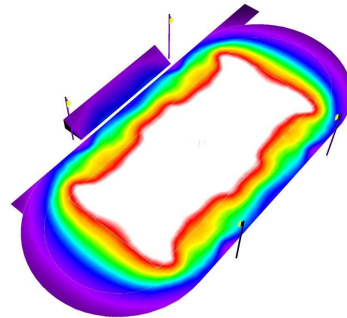
Perryville High School is a public school in Perryville, Maryland. The school is operated by Cecil County Public Schools. It is the home of the Perryville Panthers.

Scope of Work

Similar to the situation at "Bo Manor", our last completed project for CCPS, the field at Perryville was inefficient, under lit, and hassle to maintain. Also, the specifications of the project required use of the existing poles and structures.

The Solution

A precision photometric design was completed to ensure that the design specifications were met. The design called for replacement (40 total) of the existing 1500W MH light fixtures to (48 total) of our FL9M -630W LED performance sports lights.



mledtech
LED Sports Lighting



Enhance Athletes' Performance

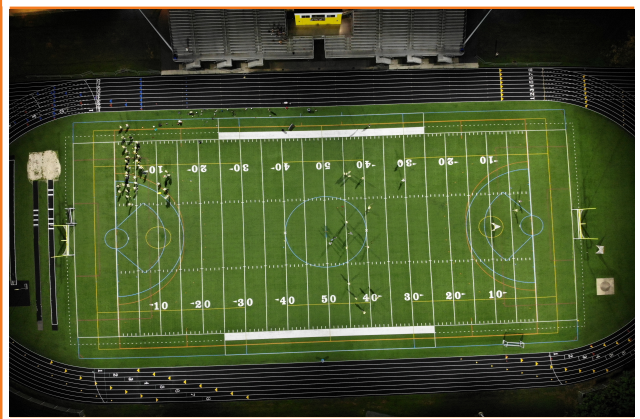
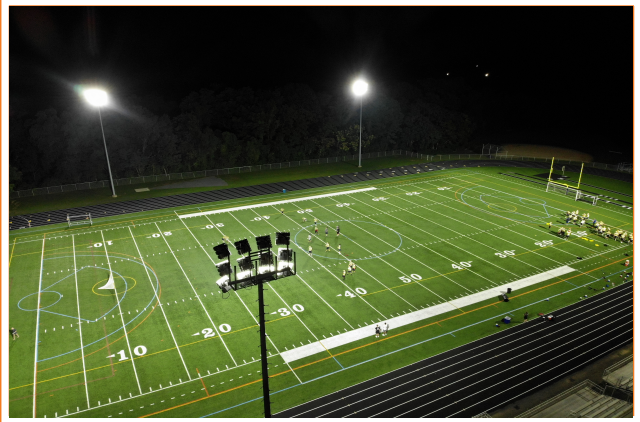
The Results



Perryville High School
 (48) Mledtech FL9M-630W LED Sports Lights
 30.6 FC Average
 Uniformity 0.64



Perryville High School
 (40) 1500W Metal Halide Flood Lights
 14FC Average
 Uniformity 0.32



Mledtech approaches each project as a unique opportunity to exceed the customers', the players' and the observers' expectations in terms of improved lighting delivered, improved visual comfort and operational savings. Our process steps help streamline this effort. We will meet directly with financial decision makers to go over final proposal in detail. Mledtech will work with the customer's contractor to provide them with detailed computer aiming points which can be set while on the ground.



mledtech

LED Sports Lighting



Tennis Courts



Recreational Facilities



Ice Rinks



Football Stadiums



Trap and Skeet

www.mledtech.com